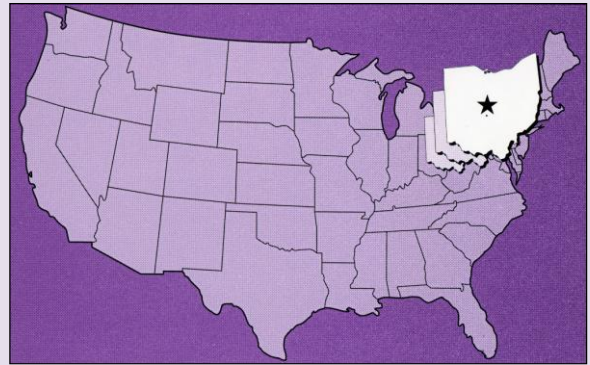


Imagine an entire community dedicated to your business.

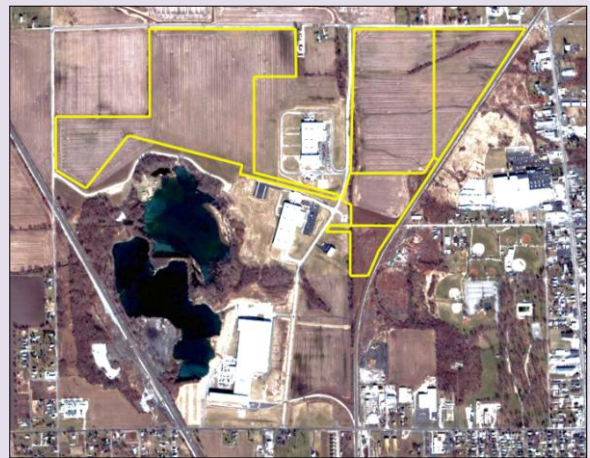
Government, Finance, Utilities, and Business leaders joined together as a team to welcome business with open arms. In Marion we have such a team: Marion **CAN DO!**, your one-stop business development center.



65% of the entire U.S. and Canadian manufacturing and population are within 650 miles of Marion, Ohio.



The Marion Airport Industrial Park has shovel ready sites with access to the Marion airport.



Dual Rail Industrial Park has 160 acres of shovel ready sites plus CSX and Norfolk Southern rail.

The greater Marion Community Area New Development Organization, Inc. can answer your questions as fast as you can ask them. On sites, infrastructure, costs, financial incentives, labor, transportation, schools, housing, and quality of life. With no red tape . . . just a red carpet.

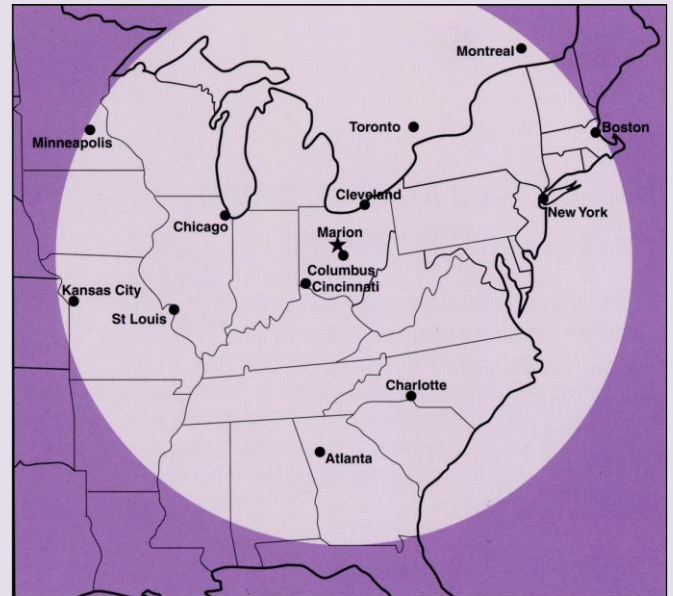


The MIC Intermodal Facility has 1.8 million square feet under roof for distribution and warehousing.

What makes Marion a unique place to be?

- ❖ Marion has a fully serviced dual rail industrial park. Over 160 acres that are shovel ready. Existing companies in the park are US Yachiyo, Arcelormittal, Marion Industries and Sakamura.
- ❖ Marion is the home to the largest dryer manufacturing plant in the world. Whirlpool's Marion Division produces 22,000 dryers per day.
- ❖ Marion is home to the Marion Industrial Center, a 450 acre intermodal facility with 1.8 million square foot under roof.
- ❖ Marion has a growing regional medical presence with two hospitals, a health center, a downtown medical and dental clinic, two urgent care facilities and a cancer center.
- ❖ Marion is developing a strong industrial agriculture presence with the addition of POET Biofuels to Morral Companies.
- ❖ Sixty five percent of the entire U.S and Canadian population is within 650 miles of Marion. US 23, a major north-south four lane highway, provides access to many major east-west thoroughfares.
- ❖ Marion continues to have a strong manufacturing base. Thirty two percent of Marion County's private sector work force is in manufacturing.
- ❖ Marion's industrial base has longevity as evidenced by:
Wilson Bohannan Lock Co. – 100 yrs.
Wyandot, Inc. – 75 yrs.
Whirlpool, Marion – 56 yrs.
- ❖ Marion's education institutions include The Ohio State University at Marion; Marion Technical College; Tri Rivers Educational Computer Association and Tri Rivers Career center.
- ❖ Marion is the home to Warren G. Harding – the 29th president of the United States. His home and monument are National Historical Landmarks.

Marion is located in center of the North American Trade Market with easy accessibility by rail (CSX and Norfolk Southern), truck (MIC's Intermodal Facility) and air (Marion Municipal Airport and Port Columbus International Airport; 50 minutes) making Marion an ideal choice for distribution and warehousing. Sixty five percent of the entire U.S. and Canadian manufacturing and population are within 650 miles of Marion, Ohio.



The majority of the North American Trade Market is within one day's drive of Marion, Ohio.



Marion CAN DO!
 205 West Center Street
 Marion, OH 43302
 Local: 740-387-2267
 Toll Free: 800-841-7302
 Email: craigt@marioncando.com
 Web: www.marioncando.com



Marion's central population is just minutes from Port Columbus International Airport. Marion is well serviced by rail, road and air

Marion, Ohio

*An entire community
dedicated to your business!*



Marion CAN DO!

205 West Center Street

Marion, OH 43302

Local: 740-387-2267

Toll Free: 800-841-7302

Email: craigt@marioncando.com

Web: www.marioncando.com